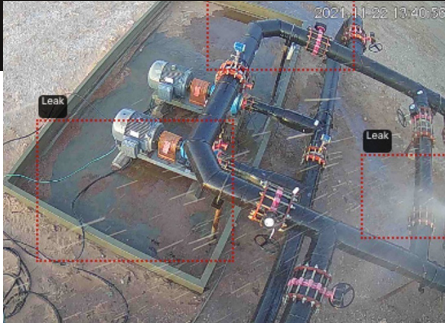




Andium offers an innovative technology designed specifically for mid-stream customers, enabling them to efficiently monitor methane leaks, liquid leaks, fires, site activity, and access while providing tank level monitoring as a secondary check to ensure optimal performance of existing equipment.



Core Features:



Liquid Leak Monitoring:

Advanced liquid leak detection capabilities allow for early identification and remediation, reducing the potential for costly and damaging incidents.



Fire Detection:

Our system utilizes state-of-the-art imaging to promptly detect and alert operators of fires, enabling rapid response to prevent further damage and potential hazards.



Site Activity and Access Monitoring:

Andium's comprehensive monitoring solution keeps track of both human and vehicular activity at your site, ensuring security and preventing unauthorized access.



Tank Level Monitoring:

As a secondary measure, our platform offers tank level monitoring that cross-verifies the functionality of existing equipment. This added layer of reliability maximizes operational efficiency and reduces downtime.



Methane Leak Detection:

Our cutting-edge optical gas sensor technology swiftly and accurately identifies methane leaks, ensuring the safety of personnel and assets while minimizing environmental impact.

Key Benefits:

- **Enhanced Safety:** Our technology ensures the well-being of personnel and the integrity of assets by promptly identifying potential risks and hazards.
- **Operational Efficiency:** Real-time monitoring of site activity and access streamlines operations and helps optimize resource allocation.

- **Cost Savings:** Early detection and prevention of leaks and fires reduce repair and replacement costs, minimizing the financial impact of such incidents.
- **Environmental Responsibility:** Swift identification and remediation of methane leaks contribute to a

lower carbon footprint, demonstrating commitment to sustainability and regulatory compliance.

- **Seamless Integration:** Our platform is designed to work in tandem with your existing equipment, enhancing reliability and performance without disrupting operations.